



## Gap Analysis Module <sup>TM</sup>

### TRAINING & SUPPORT

All REMPLAN Service packages include training conducted by Compelling Economics. Training sessions are conducted onsite and all team members are welcome to attend.

### FREE TRIAL AND DEMONSTRATIONS

No obligation REMPLAN demonstrations are available. Contact us to arrange your free information session.

### CONTACT US

1300 737 443  
www.remplan.com.au  
info@compellingeconomics.com.au



- The Gap Analysis Module provides a guide to high value strategic opportunities to further develop your local economy
- Estimates value of 'Gaps' in local supply chains and addresses the types of goods and services imported into the local economy
- Automates and organises the process of identifying potential opportunities for import replacement, increased value-adding and job creation

Economic opportunities can be realised through building on existing strengths in your local economy or through addressing current weaknesses. REMPLAN assists in understanding the structure of your economy.

Imports reflect demand in your area's economy for goods and services not supplied locally and therefore represent 'Gaps' in local supply chains. Many of the goods and services imported from overseas are priced at a level making substitution with local supply unlikely and in instances, unfeasible. Imports from the rest of Australia however may indicate opportunities for import replacement, increased value-adding and supply chain development in your area. Supply of these goods and services is currently feasible in the Australian context and may provide a guide to realistic, high value strategic opportunities to further develop your local economy. The

total replacement of imports with local production is improbable, however, it may be possible to capture a proportion of this escaping expenditure.

REMPLAN estimates the value of imports by each industry sector. The Gap Analysis Module goes beyond this to address the types of goods and services imported into the local economy.

The Gap Analysis Module integrates with REMPLAN and automates and organises the process of identifying potential opportunities for import replacement, increased value-adding and supply chain development for up to 111 industry sectors. The Gap Analysis Module has been designed to be easy to use with compelling graphs and charts together with informative commentary. A formal background in economics is not required.

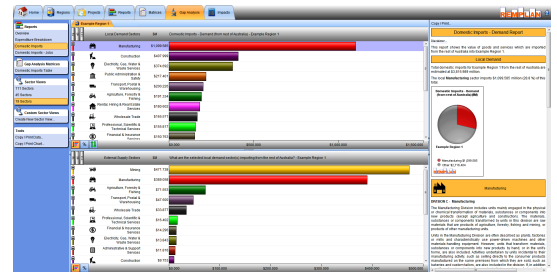
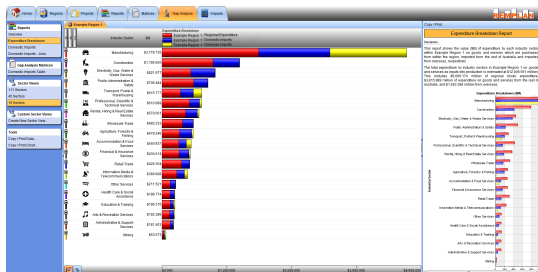


# REMPPLAN



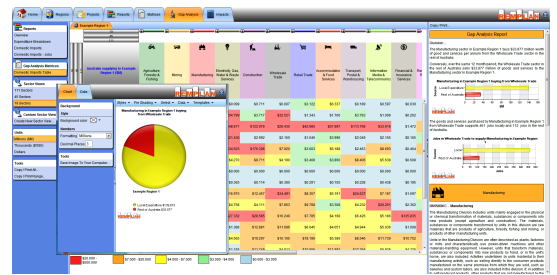
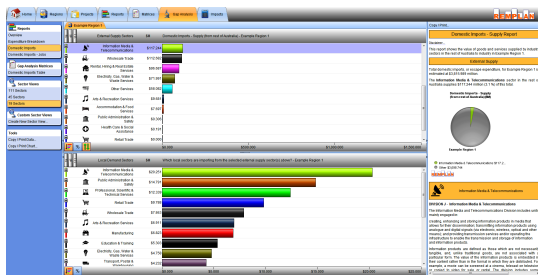
## Screen Shots

Examples of the information displayed in the REMPLAN Gap Analysis Module:



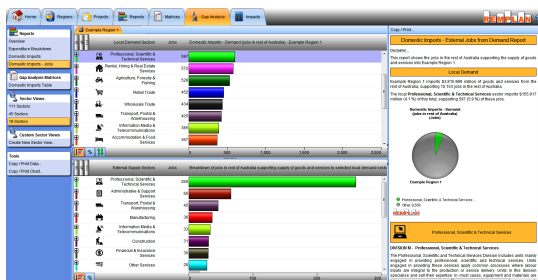
**Expenditure:** Local industry sectors' expenditure on goods and services which are purchased from within the region, imported from the rest of Australia and imported from overseas.

**Domestic Imports:** A breakdown of what each industry sector is importing from the rest of Australia.



**External Supply:** Industry sectors from elsewhere in Australia that supply goods and services to the local economy.

**Domestic Imports Table:** A table detailing industry sectors within the region importing from the rest of Australia. Gaps in local supply chains are highlighted in the table and represent potential import replacement opportunities.



**External Jobs:** Details the number of jobs in each industry elsewhere in Australia that are supported by supplying goods and services to the local economy. That is, external jobs supported by local imports. This report highlights the potential job creation opportunities associated with replacing imports with local production.

### PACKAGE REQUIREMENTS

The Gap Analysis Module is an optional analytical tool for use in conjunction with REMPLAN.

An additional annual fee applies for the provision of this module.

### SYSTEM REQUIREMENTS

REMPPLAN system requirements include:

- Windows XP or later running any commonly used internet browser - Internet Explorer 6, 7, 8, or 9, or the latest version of Firefox, Chrome, Safari or Opera
- Javascript enabled
- Cookies enabled recommended
- Screen resolution of 1024 x 768 recommended
- Printers supported by Windows XP / Vista / 7

For more information on the Gap Analysis Module please visit us on the Web at:

[remplan.com.au/products/gapanalysis](http://remplan.com.au/products/gapanalysis)



PO Box 5006,  
Sandhurst East, VIC 3550  
Phone 03 5444 4788  
Fax 03 5444 4688  
[info@compellingeconomics.com.au](mailto:info@compellingeconomics.com.au)